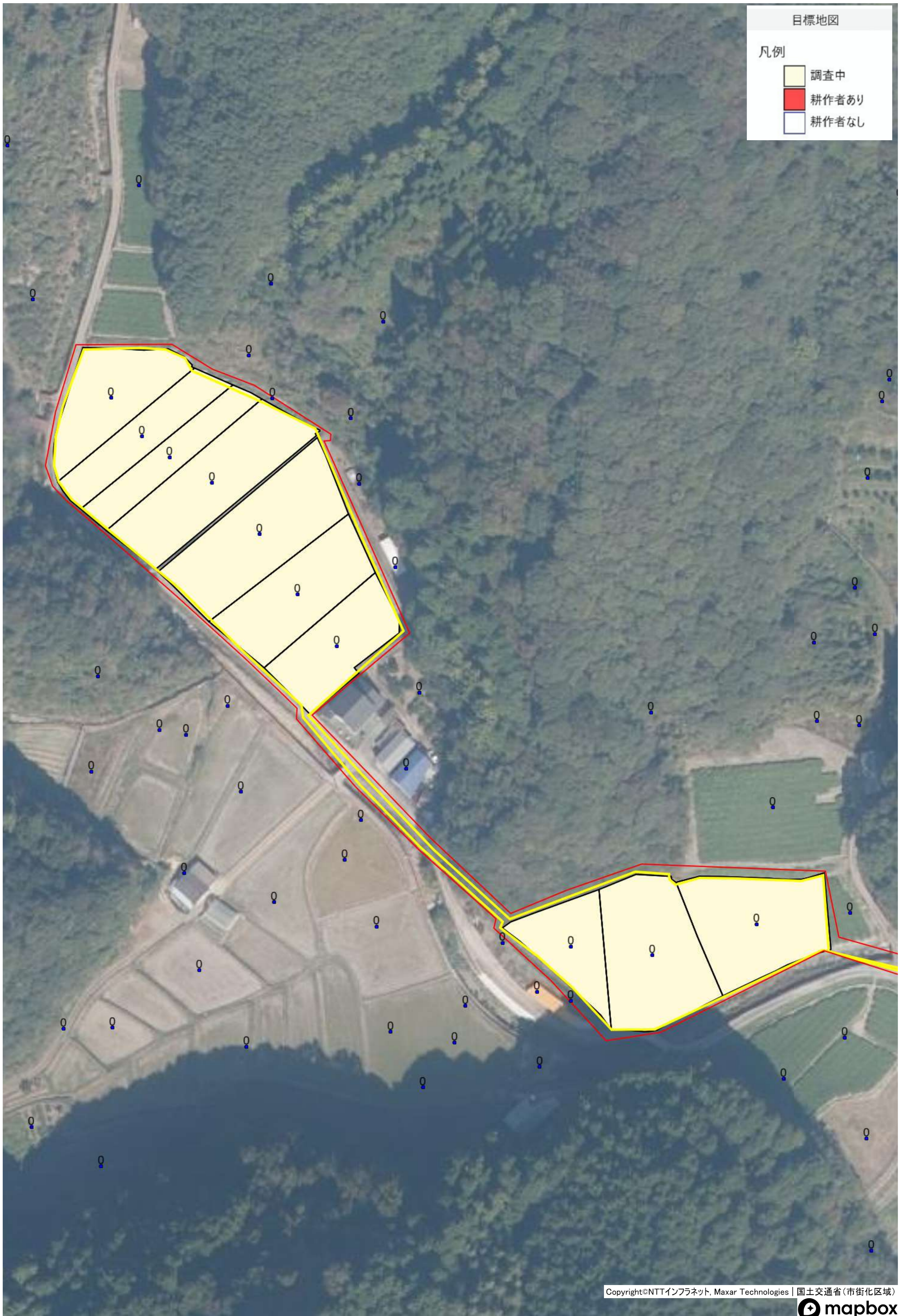
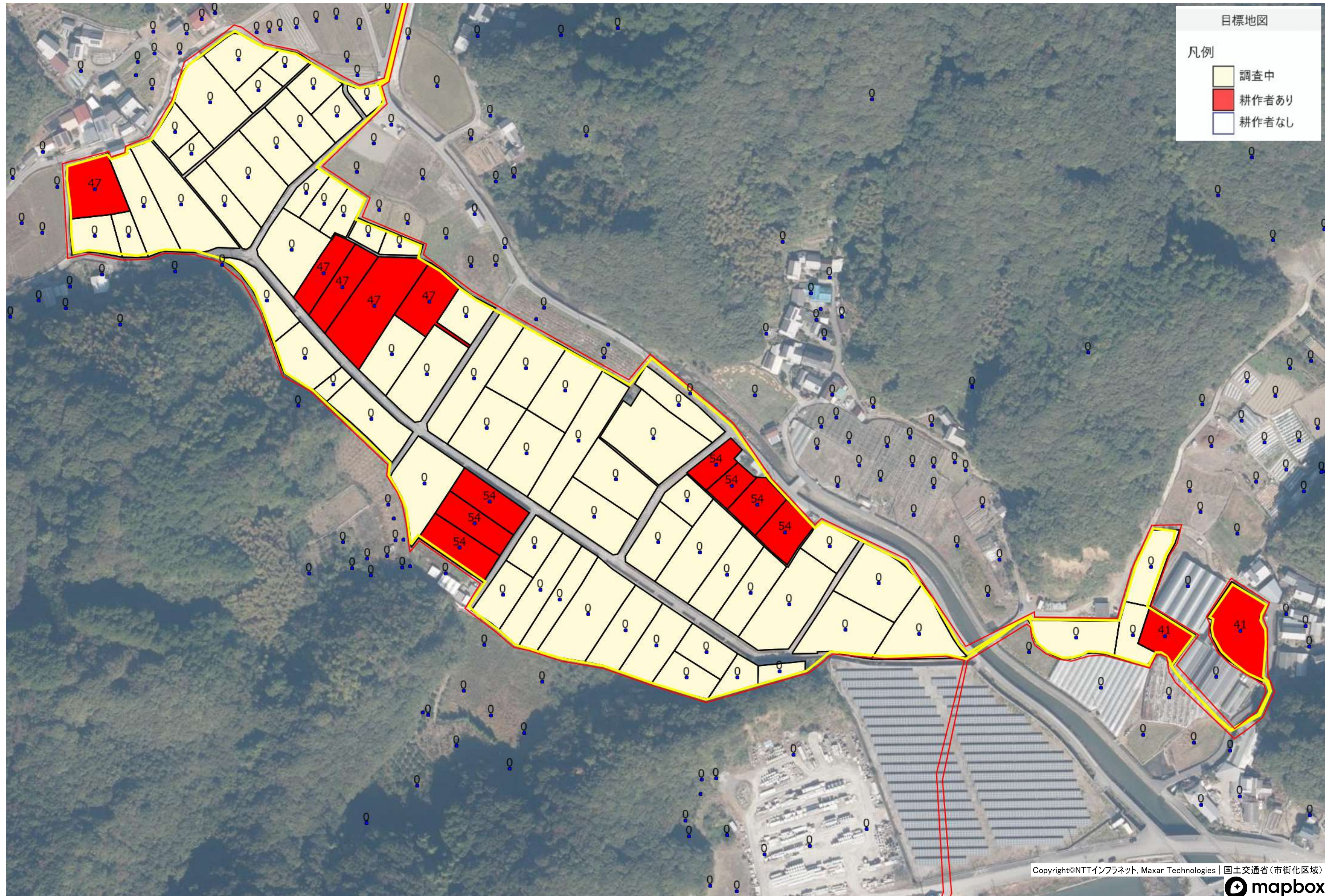


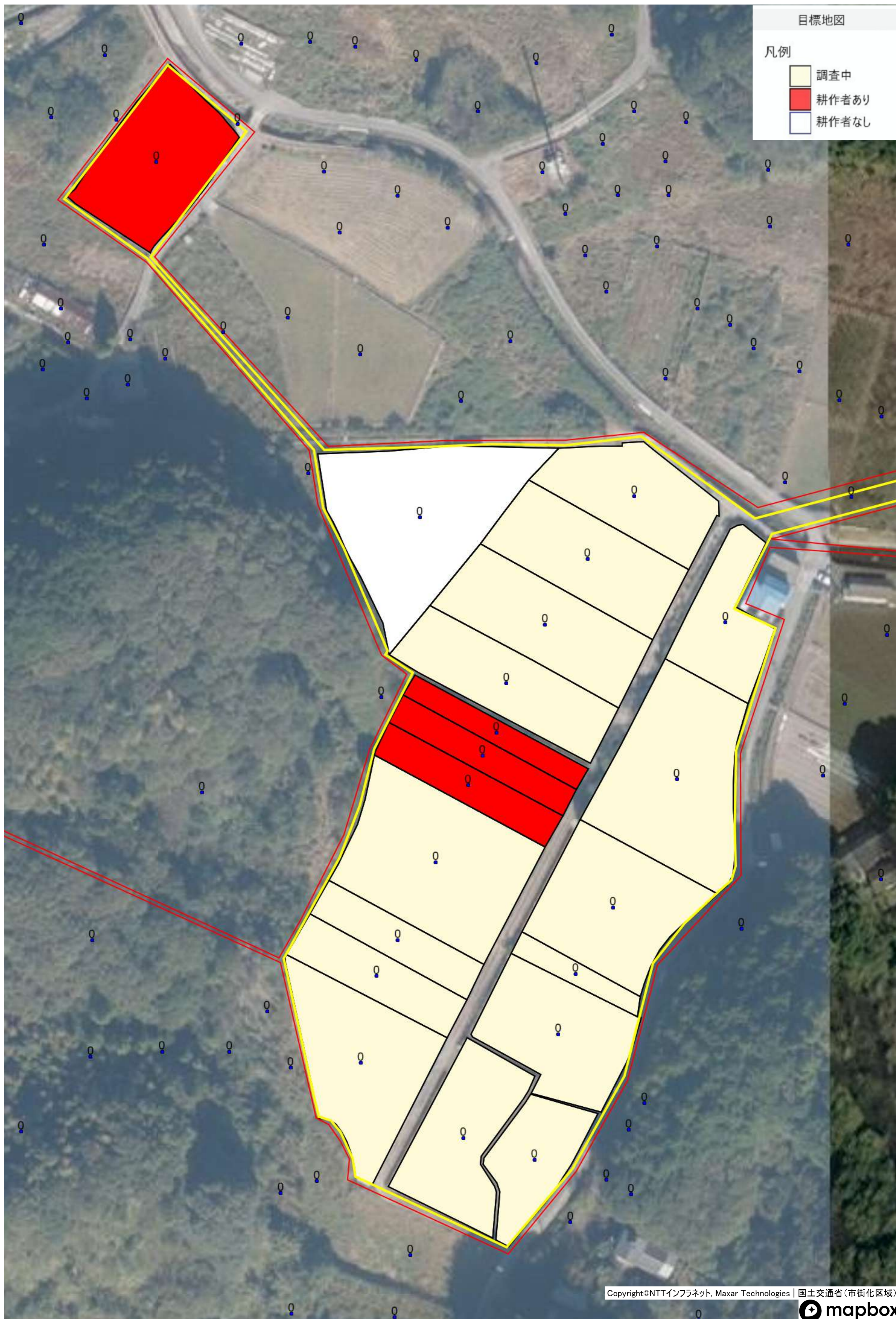
# 浦ノ内 (灰方)



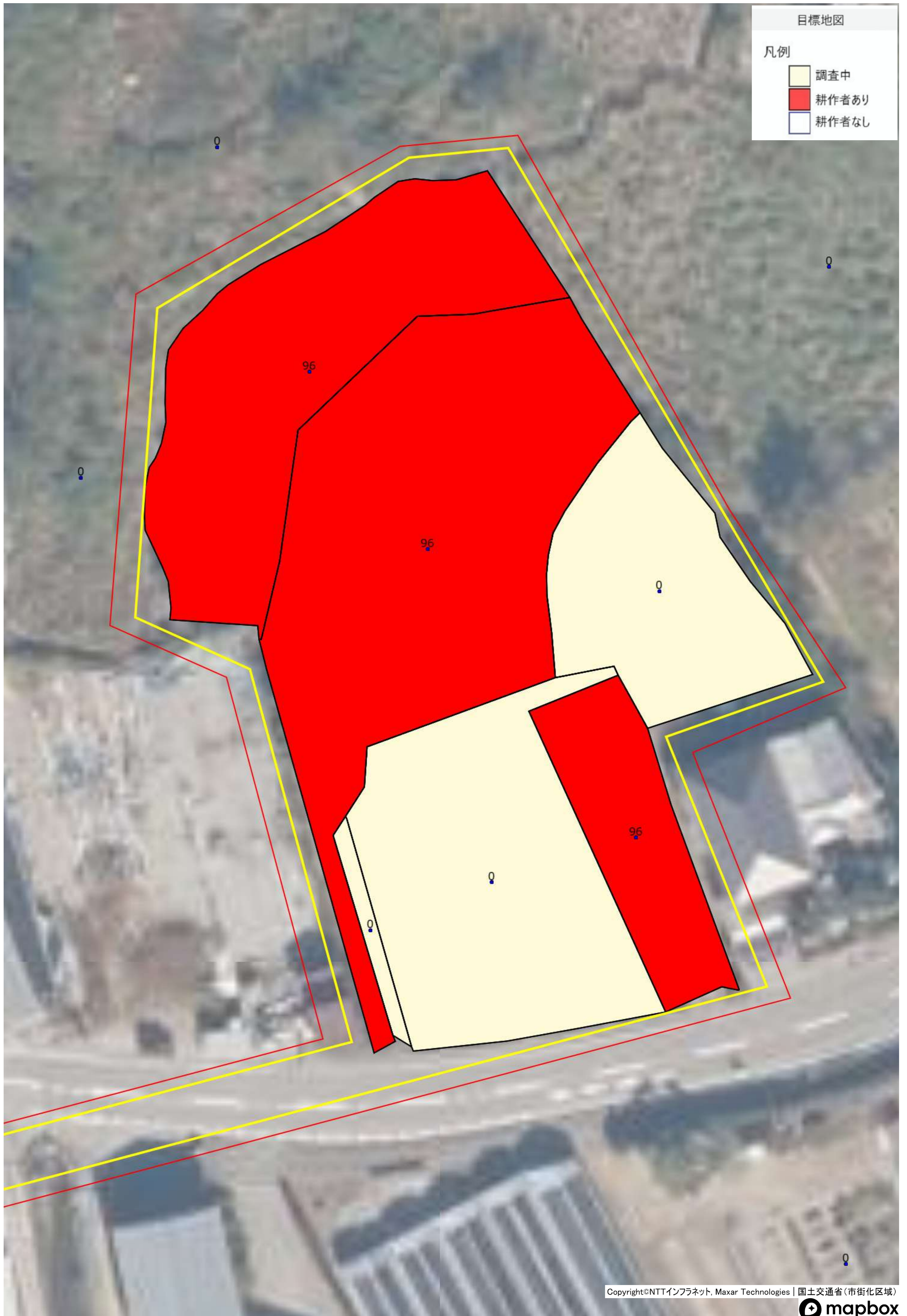
# 浦ノ内 (灰方)



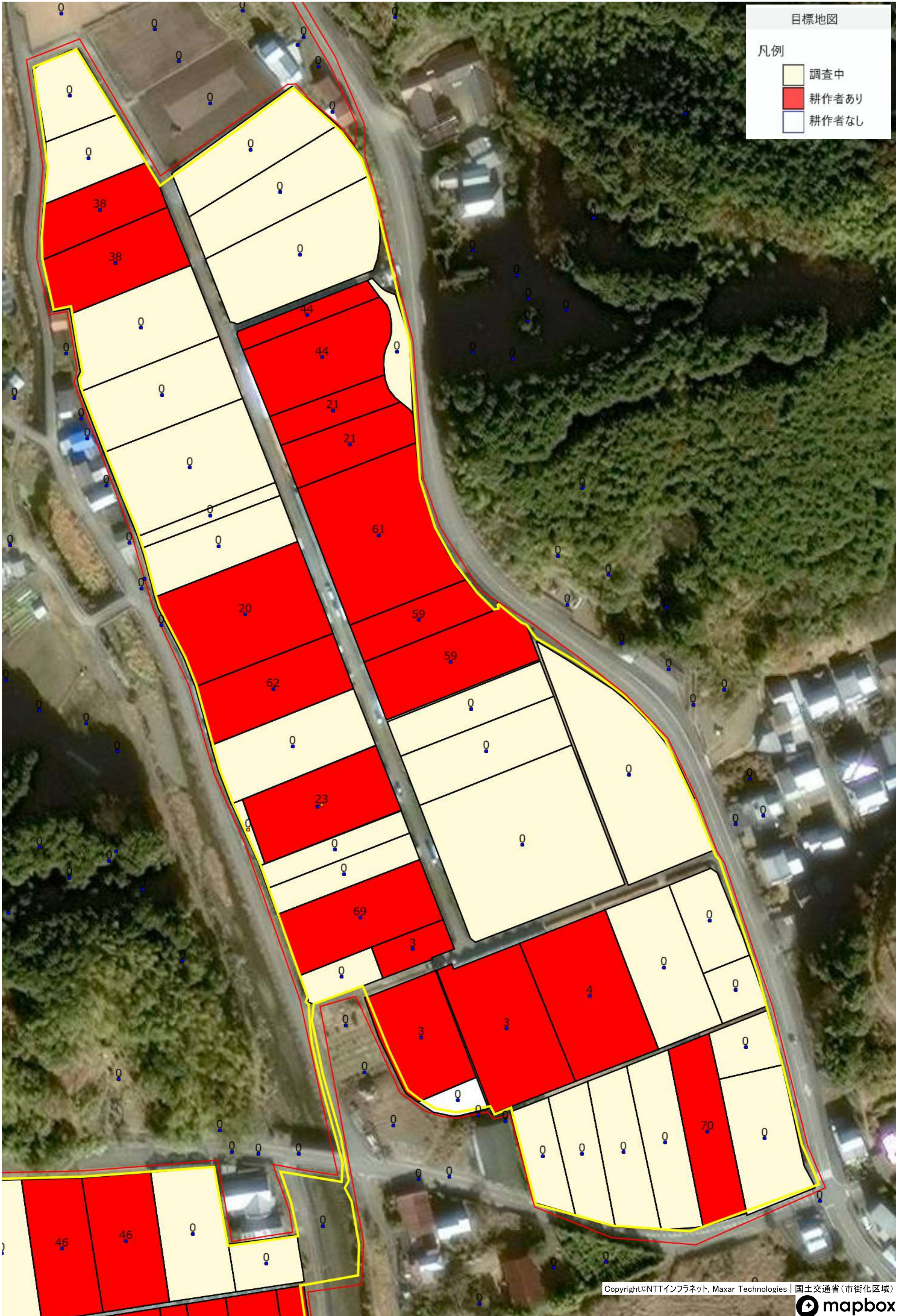
# 浦ノ内 (出見)



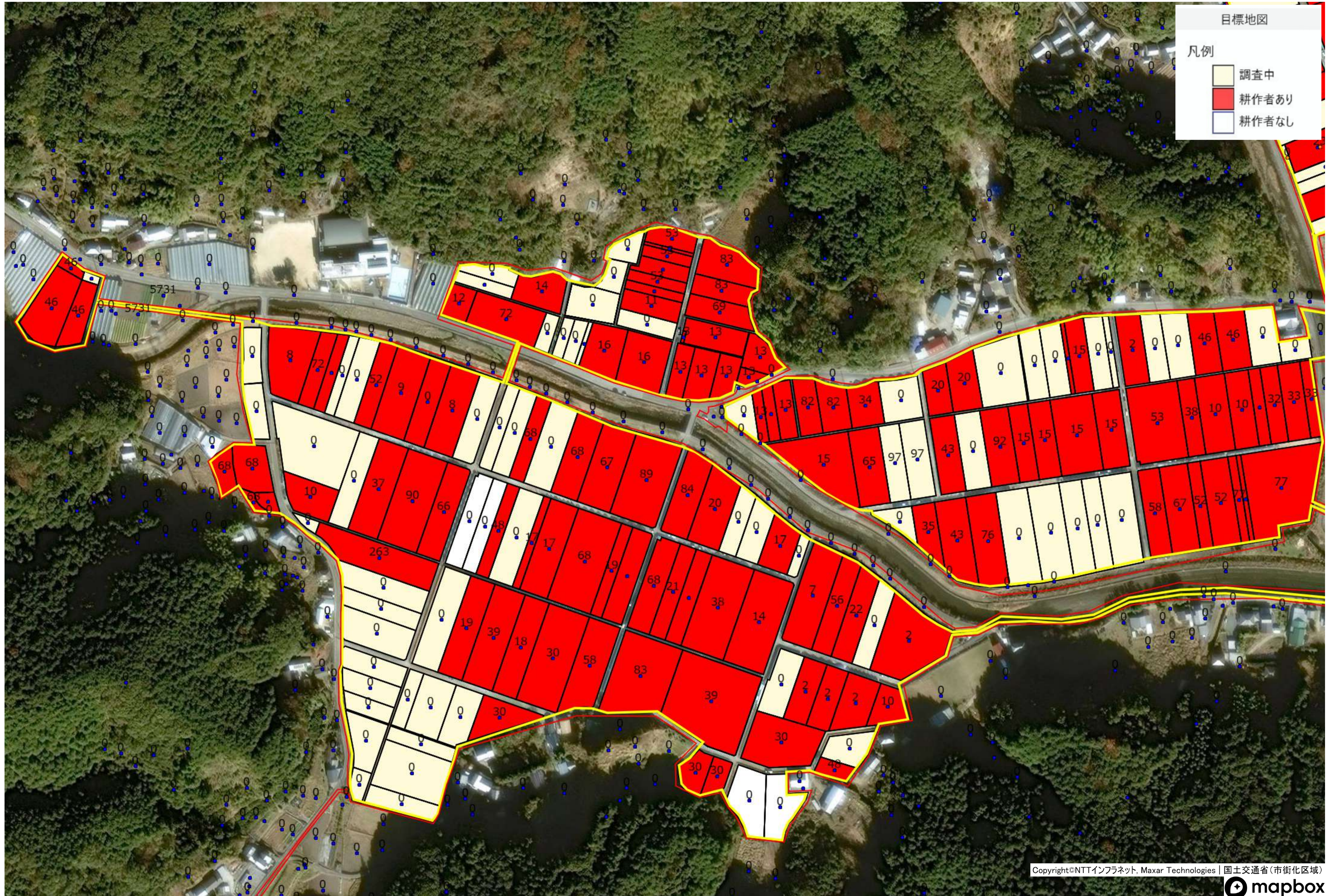
# 浦ノ内 (出見)



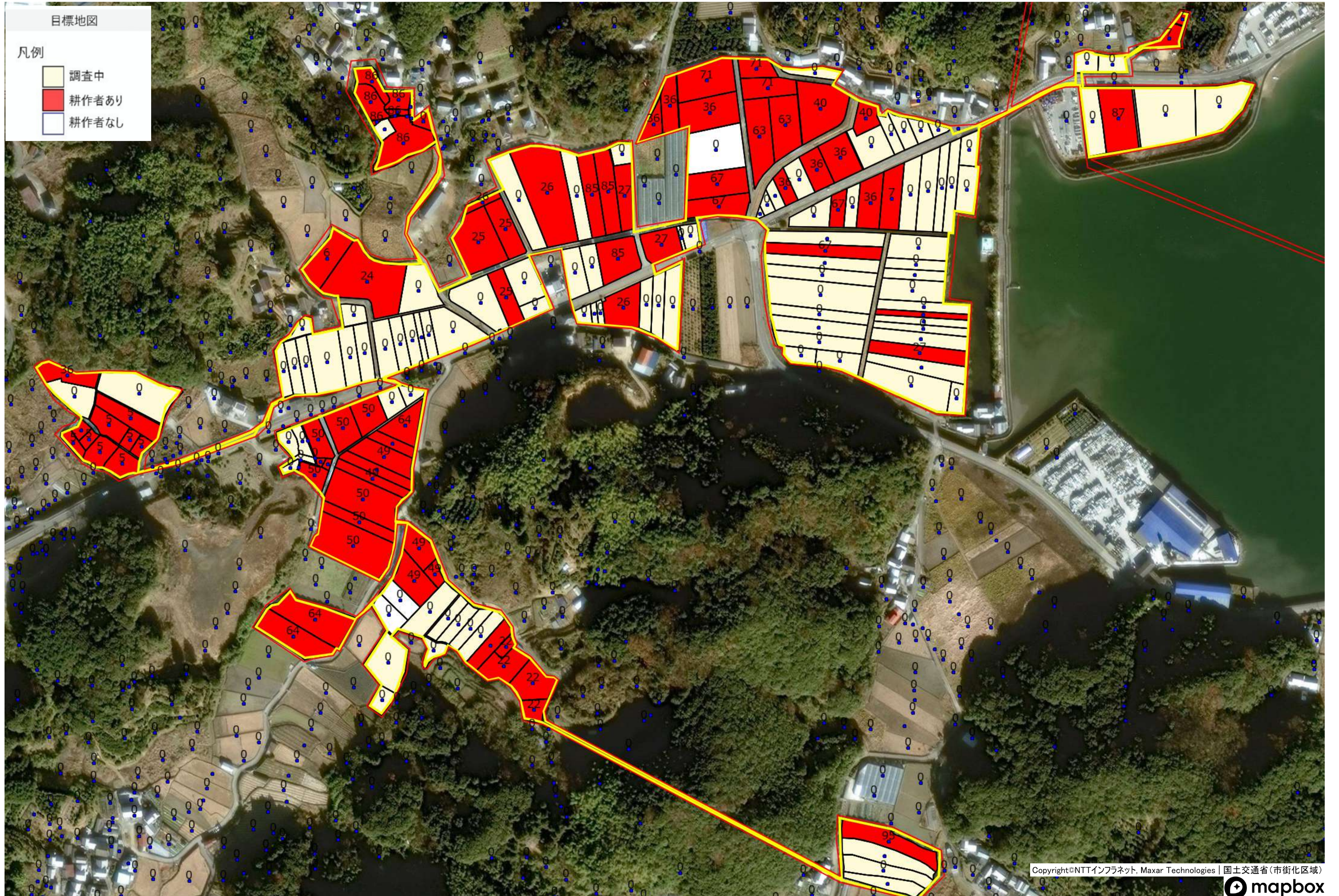
浦ノ内 (東分)



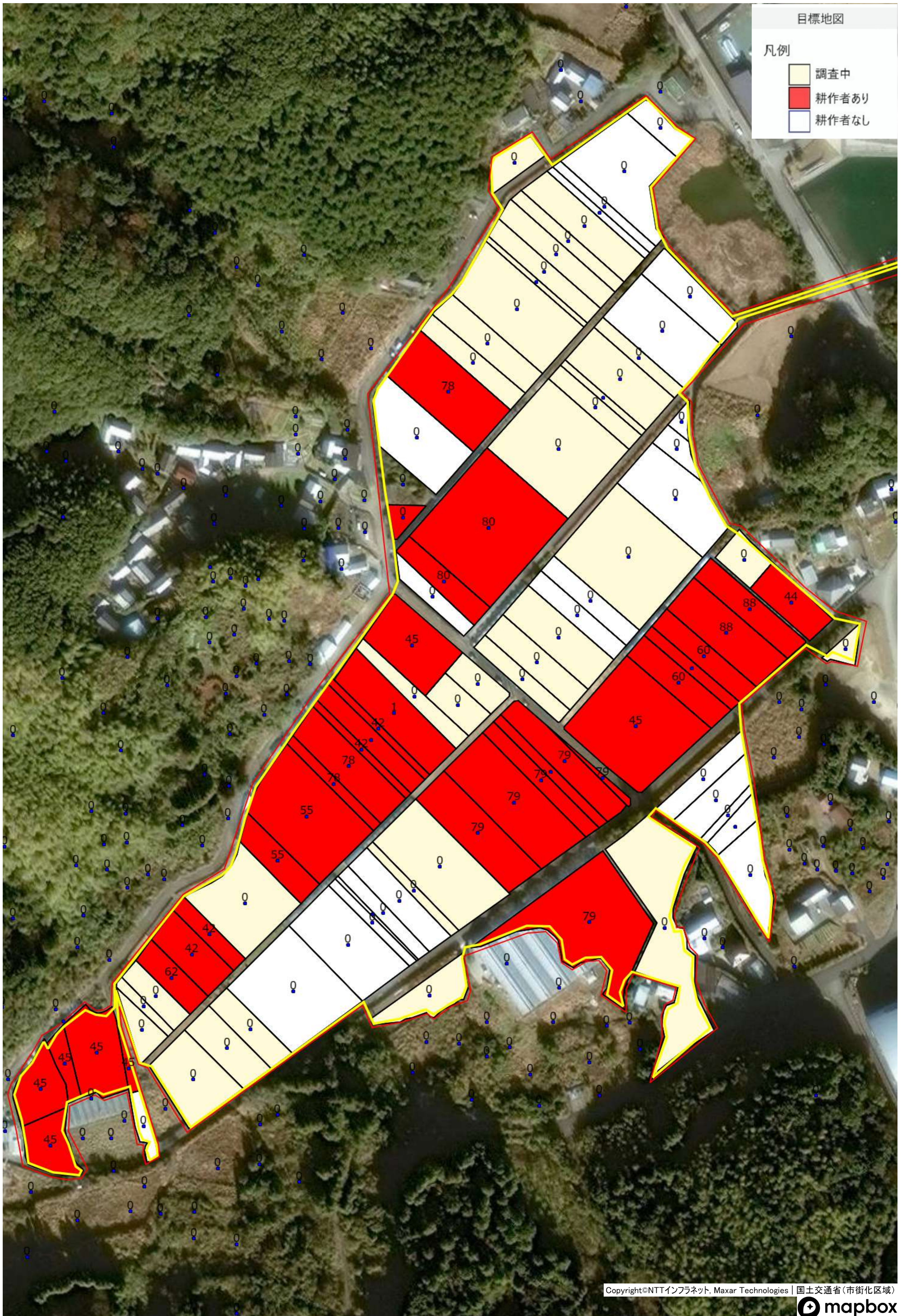
# 浦ノ内 (東分)



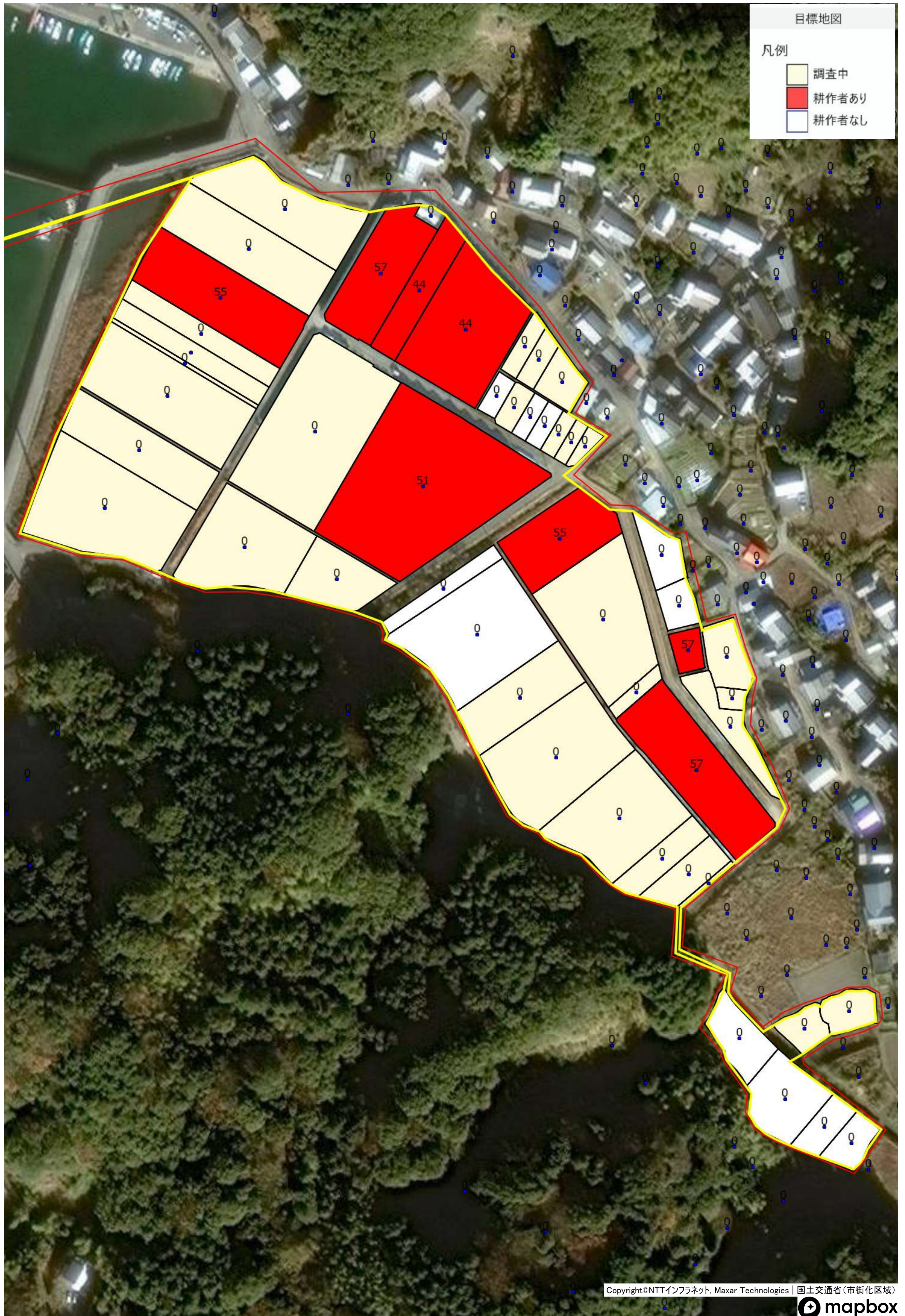
# 浦ノ内 (西分)



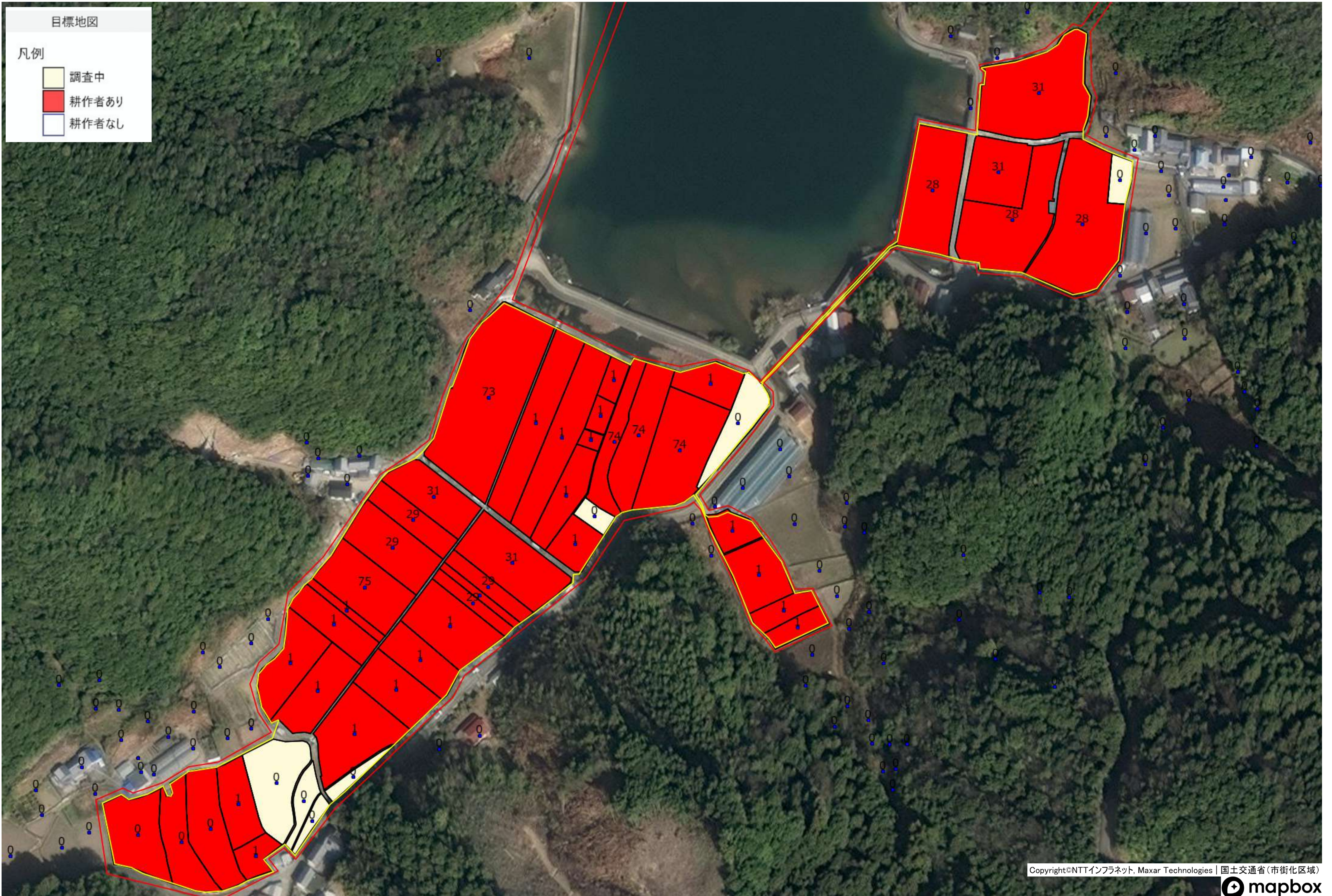
浦ノ内 (坂内)



浦ノ内 (鳴無)



# 浦ノ内 (福良)



浦ノ内 (福良)

